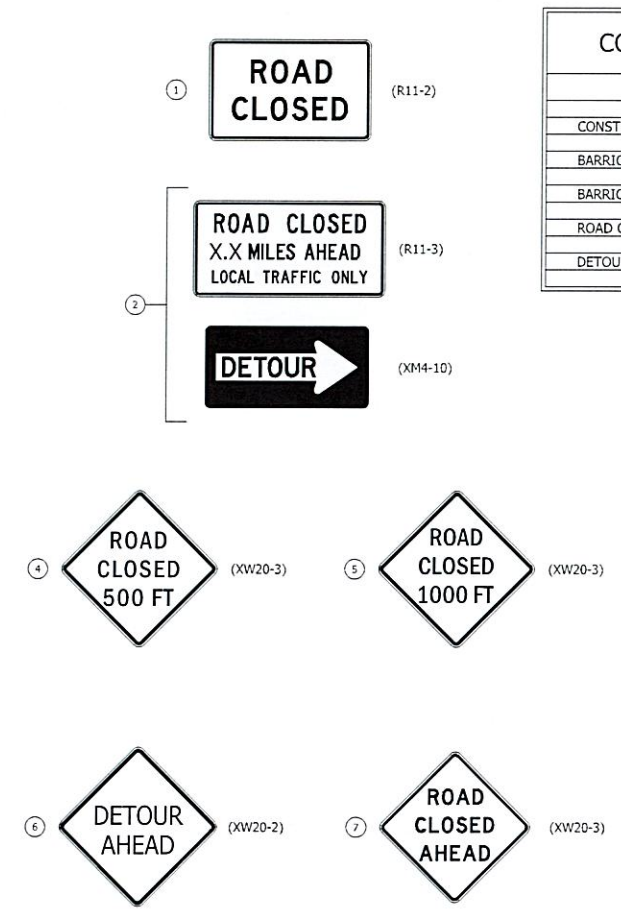
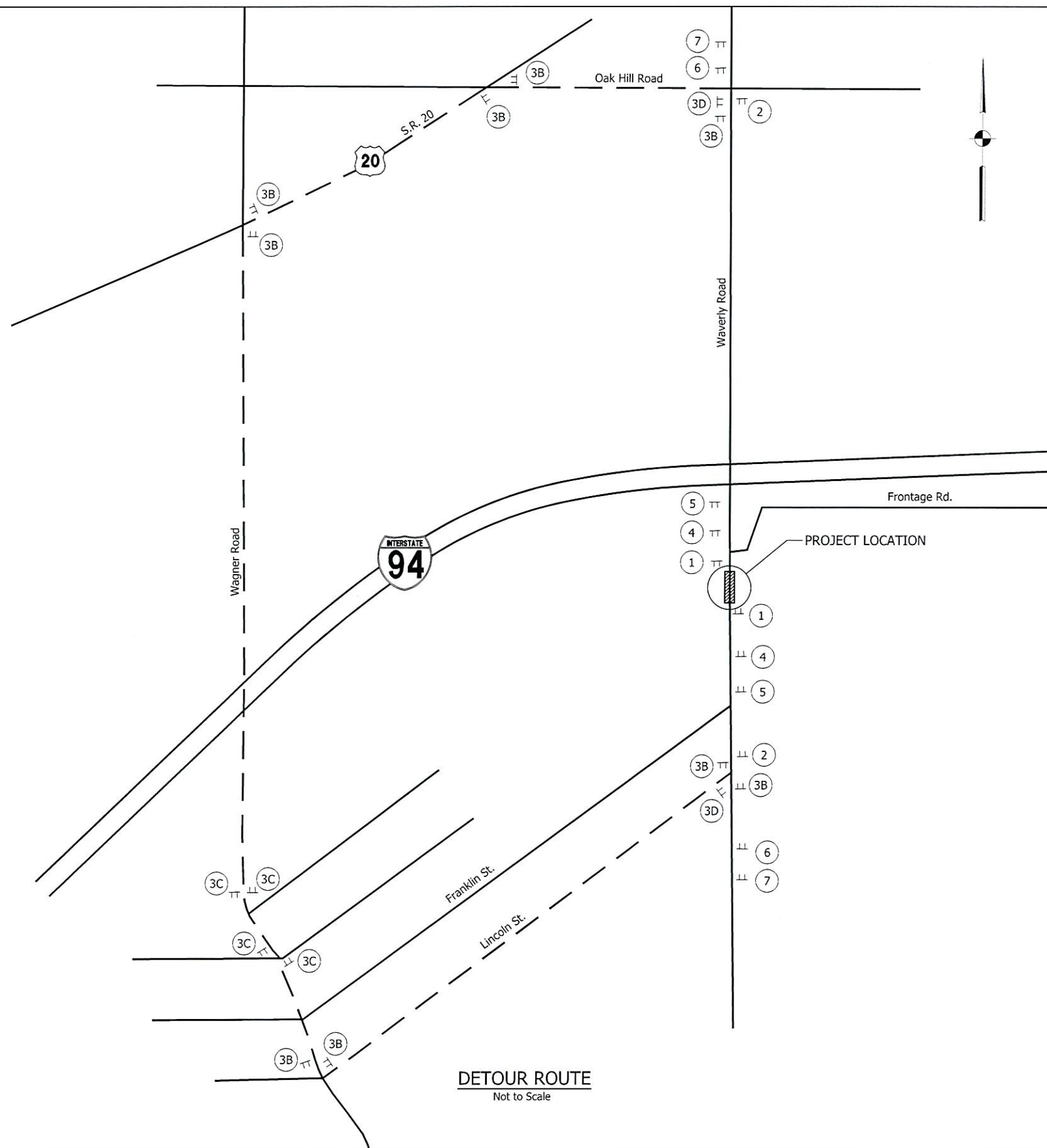


File Name: P:\BR\CD\19-210\Bridges\Plans\Detour.dwg Plot Date: 10/13/2023 Plotted By: Bradley Salpietro



CONSTRUCTION SIGN SUMMARY	
TYPE	QUANTITY
CONSTRUCTION SIGN, A	10 Ea.
BARRICADE, III-A	48 Lft.
BARRICADE, III-B	48 Lft.
ROAD CLOSURE SIGN ASSEMBLY	4 Ea.
DETOUR ROUTE MARKER ASSEMBLY	15 Ea.

- LEGEND**
- ① Type-III-A Barricade and Road Closure Sign Assembly (with R11-2)
 - ② Type-III-B Barricade and Road Closure Sign Assembly (with R11-3, XM 4-10)
 - ③ Detour Route Marker (Waverly Road)
 - ④ XW20-3 (Road Closed, 500')
 - ⑤ XW20-3 (Road Closed, 1000')
 - ⑥ XW20-2 (Detour Ahead)
 - ⑦ XW20-3 (Road Closed Ahead)
 - ▨ - Construction Area

- NOTES:**
- For detour route marker assemblies (A), (B), (C) and (D) see Std. Dwg. E-801-TCDDT-04.
 - "Road Closure Notice" Signs (XG 20-5) to be placed as directed by the engineer prior to construction.
 - The contractor shall notify the US Post Office, Porter County Highway Department, Town of Chesterton, and Town of Porter prior to closing and opening the roadway. The contractor shall be responsible for obtaining permits and bear the cost for any fees.



8440 Allison Pointe Boulevard, Suite 200
 Indianapolis, IN 46250
 Phone 317-895-2585
 www.ucindy.com



RECOMMENDED FOR APPROVAL	<i>[Signature]</i>	10/13/23
DESIGNED:	MAS	DRAWN: DJZ
CHECKED:	JDS	CHECKED: JDS

INDIANA
 DEPARTMENT OF TRANSPORTATION

DETOUR ROUTE
 WAVERLY ROAD OVER EAST ARM LITTLE CALUMET RIVER

HORIZONTAL SCALE	BRIDGE FILE
AS NOTED	64-00149 B
VERTICAL SCALE	DESIGNATION
AS NOTED	1802932
SURVEY BOOK	SHEETS
-	4 of 43
CONTRACT	PROJECT
B-42063	1802932